



Overview

- Two bedrooms, two bathrooms
- Fantastic new apartment
- Situated on the third floor
- ASK ABOUT INCENTIVES
- Close to transport links
- No parking



Interested? Please contact our New Homes team to find out more, or to book a viewing.

newhomes@haslams.net
0118 960 1010



Property description

RESERVE YOUR NEW HOME IN NOVEMBER and have the cost of your mortgage covered for up to 6 months* Situated on the top floor of this exclusive development, this two bedroom apartment with unconventional layout, is an exciting and unique home ideal for a young professional seeking a vibrant lifestyle with convenience. ONE Reading is an exclusive collection of highly desirable apartments, a mere stone's throw from Reading Station and the Oracle. Unique in design, this historical building has been sympathetically redeveloped to create 14 new apartments.

Payment amount will be based upon the purchaser's mortgage offer. Maximum mortgage payment of £500 per month for a maximum of 6 months. Total payment must not be more than 5% of property purchase price. Payment made by deduction from funds due on completion. Subject to lenders approval. T E Station Road Ltd reserves the right to withdraw or extend the offer at any time. Offer is subject to T E Station Road Ltd standard terms and conditions and cannot be used in conjunction with any other incentive or offer nor exchanged for cash YOUR HOME MAY BE REPOSSESSED IF YOU DO NOT KEEP UP REPAYMENTS ON A MORTGAGE OR ANY OTHER DEBT SECURED ON IT. IT IS YOUR RESPONSIBILITY TO MAKE PAYMENTS DURING THE COURSE OF THE MORTGAGE.



Further details

Kitchen/Living/Dining room
14'6" x 13'3"

Bedroom 1
12'5" x 9'3"

En-suite
7'3" x 7'1"

Bedroom 2
10'9" x 7'1"

Shower room
8'4" x 7'1"

General Note
Local Authority: Reading Borough Council
Council Tax Band: B

Leasehold: 999 years from 15/07/2022
Ground rent: Peppercorn
Service charge: £1,183 pa
EPC Rating: C

Agents Note:

The photographs are used for illustrative purposes only and reflect the show home at ONE Reading. They do not reflect the layout and finishes of this home.

Specifications are correct at time of going to print. Whilst these particulars are prepared with all due care for the convenience of intending purchasers, the information is intended as a preliminary guide only. For more information, please speak to a Sales Consultant.

Specification

Kitchen:

- Handleless matt navy kitchen units
- Square edge white marble effect compact laminate with undermount sink
- Under unit lighting
- Indesit integrated electric double oven
- Hotpoint electric induction hob
- Integrated hood
- Hotpoint integrated fridge/freezer
- Indesit integrated dishwasher
- Bosch integrated microwave
- Beko integrated washer/dryer

Bathrooms:

- Wash basin with storage drawers
- White WC with soft close seat and cover
- Matt black round thermostatic shower set and hand shower
- Acrylic bath with black shower screen

Lighting and Electrics:

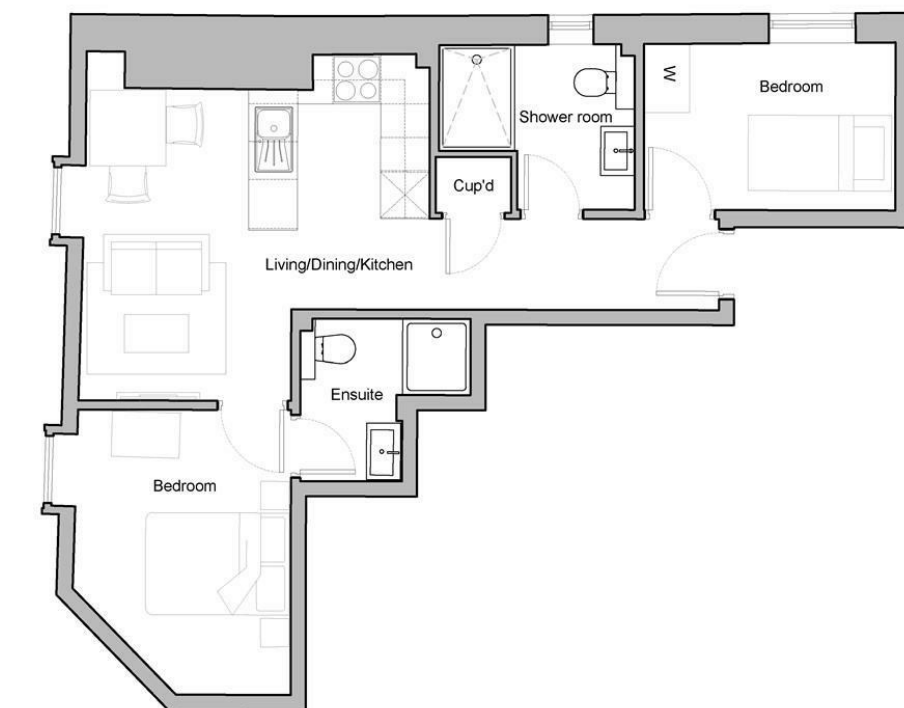
- LED downlights to all areas
- Flush black metal sockets
- Shaver sockets to bathroom/en-suites
- 'Hyperoptic' superfast broadband to living spaces
- Video entry system

Heating:

- Electric heating throughout
- Matt black heated towel rails to bathrooms and en-suites

Flooring:

- Laminate flooring throughout the bedrooms, living, dining and kitchen areas
- Ceramic floor tiles to bathroom



Third Floor - Flat 15



Please contact our New Homes team to find out more, or to book a viewing.

newhomes@haslams.net
0118 960 1010

The specifications outlined in this brochure are indicative only. Developers reserve the right to make any alterations to the specifications without warning. Whilst these particulars are prepared with all due care, the information is intended as a preliminary guide only. The computer generated images and photographs do not necessarily represent the actual finishings/elevation or treatments, furnishings and fittings at this development. Room measurements are approximate only. Floor plans, dimensions and specifications are correct at the time of print. Nothing contained in this brochure shall constitute or form part of any contract. Information contained in this brochure is accurate at the time of going to print.